

Supplementary Data 1

Neighbor Joining Phylogenetic trees

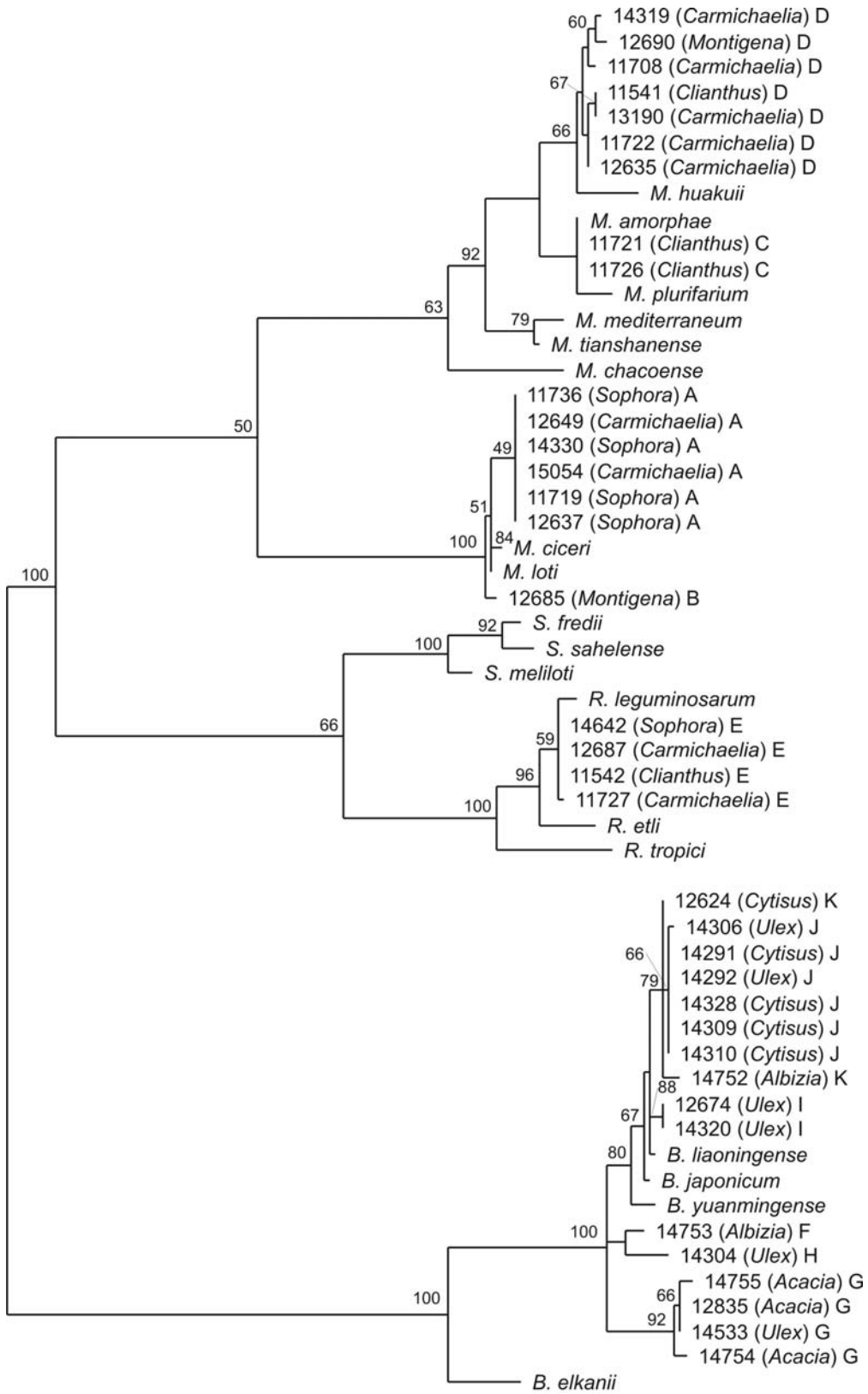
Figure Legends

Supplementary Fig. A. Phylogenetic tree based on 16S rDNA sequences showing the relationships of rhizobia isolates from New Zealand legume flora to type strains of rhizobia. The numbers are the isolate name and the accession number in the ICMP culture collection. The genus of the legume that this bacterium was isolated from is shown in parentheses. The letter following the parentheses indicates the Genomic grouping as defined by the 16S rDNA data. The tree was constructed using neighbour-joining analysis with HKY85 distance correction. Bootstrap percentages (50% majority-rule) from 1000 bootstrap replicates are shown. Final $-\ln L = 4886.20$

Supplementary Fig. B. Phylogenetic tree based on *atpD* sequences. Notation and analysis as for Supplementary Fig. A. Final $-\ln L = 4063.97$

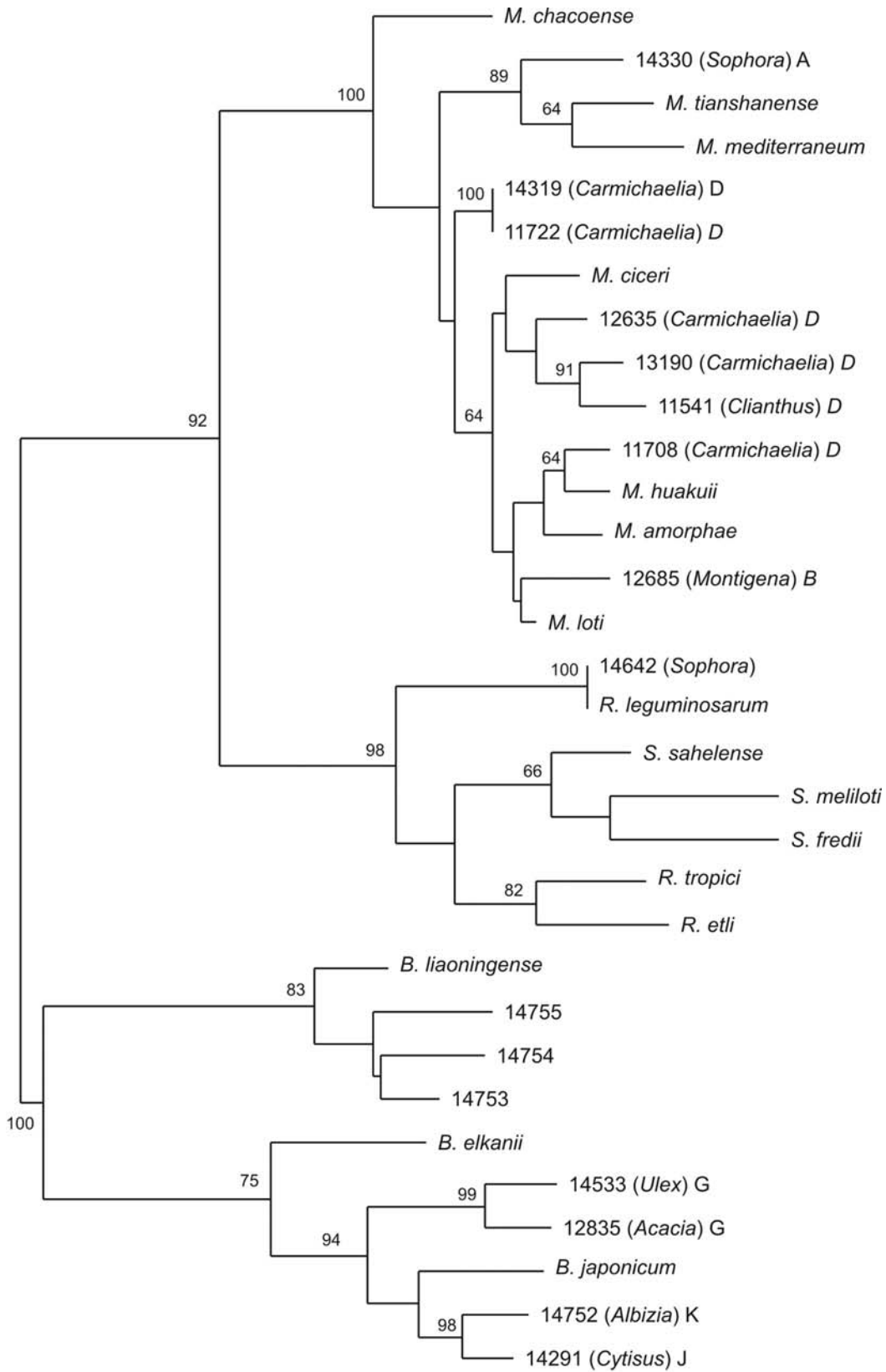
Supplementary Fig. C. Phylogenetic tree based on *glnII* sequences. Notation and analysis as for Supplementary Fig. A. Final $-\ln L = 7047.86$

Supplementary Fig. D. Phylogenetic tree based on *recA* sequences. Notation and analysis as for Supplementary Fig. A. Final $-\ln L = 4581.02$

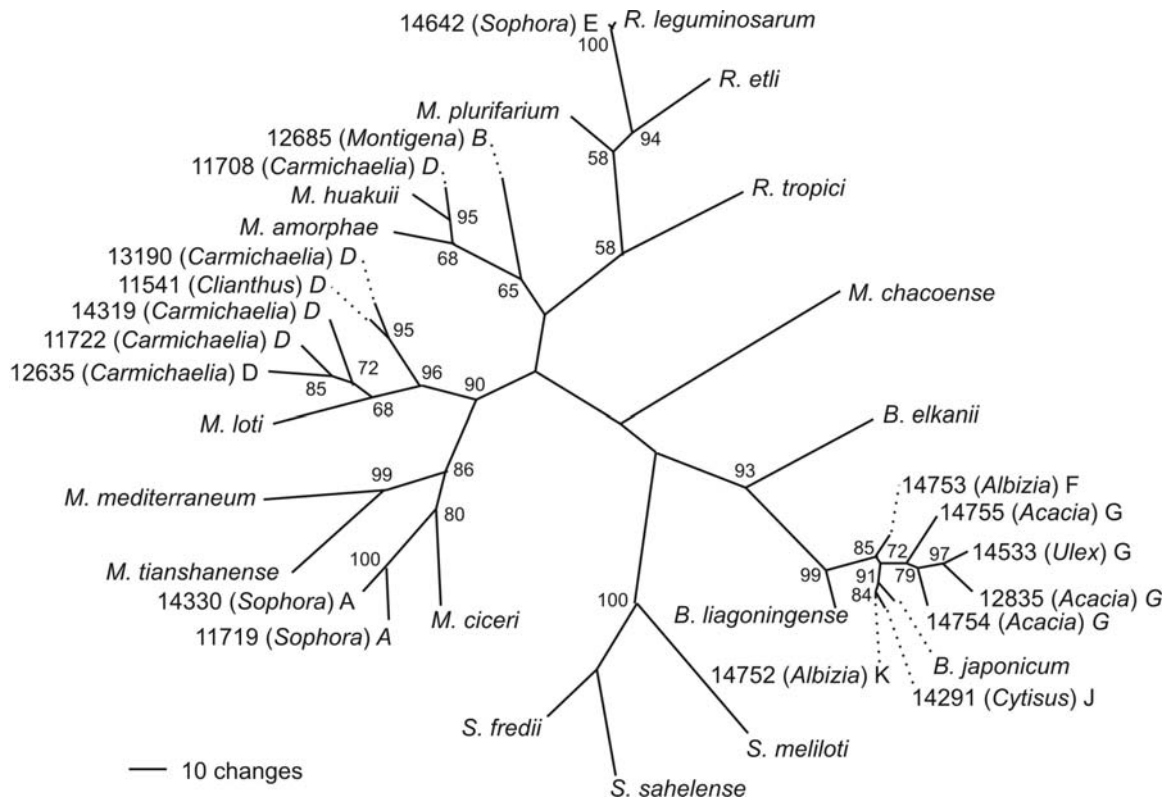


— 5 changes

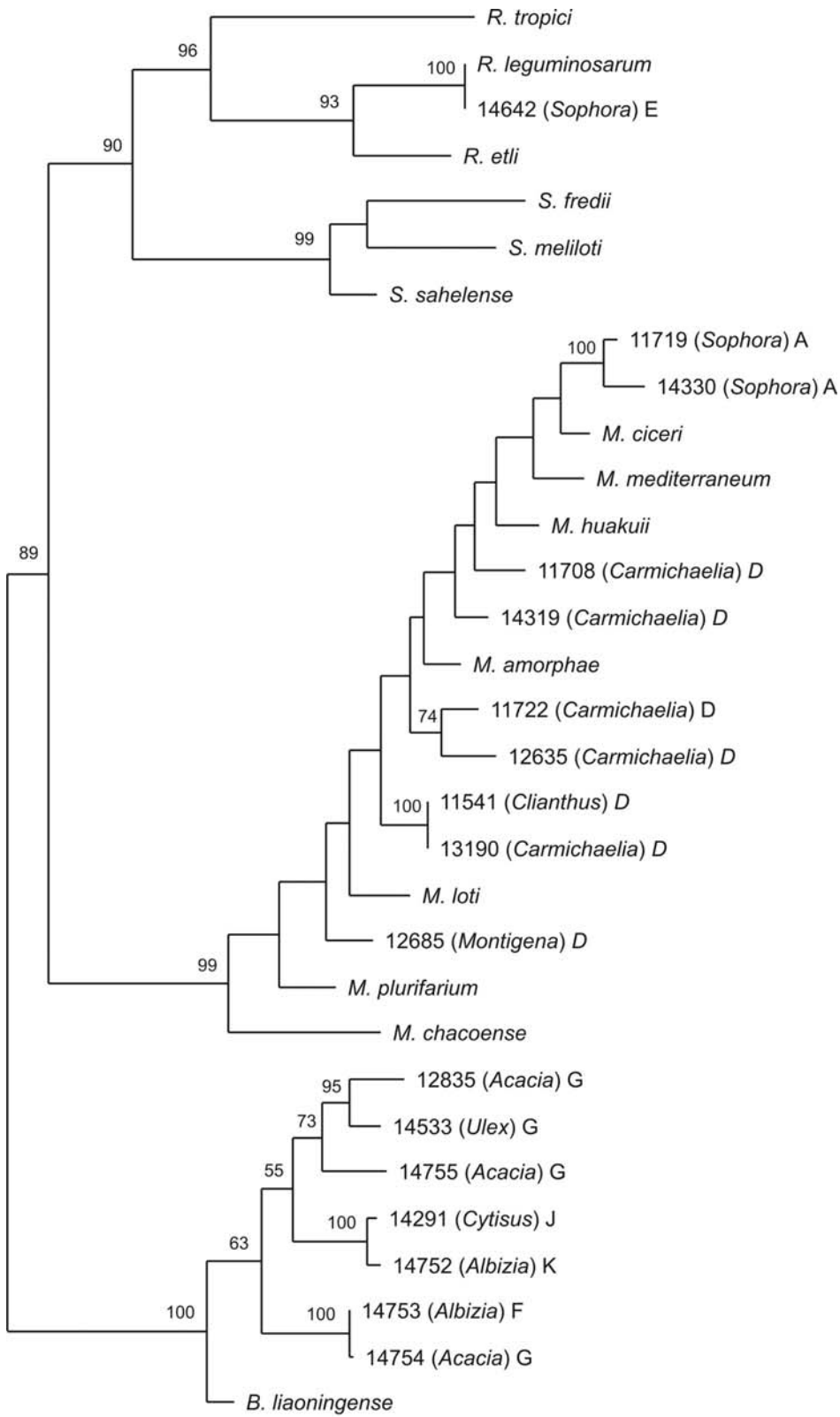
Supplementary Fig. A.



— 10 changes
 Supplementary Fig. B.



Supplementary Fig. C



— 10 changes

Supplementary Fig. D.